

Descriptions and Use

This document is to be used to configure and set up a ACS configuration for any PC to connect to an as400. This document is designed to be used with the image prepared for creating all new PC's.

ACS can be installed on any device – Windows, Apple or any device that can run Java.

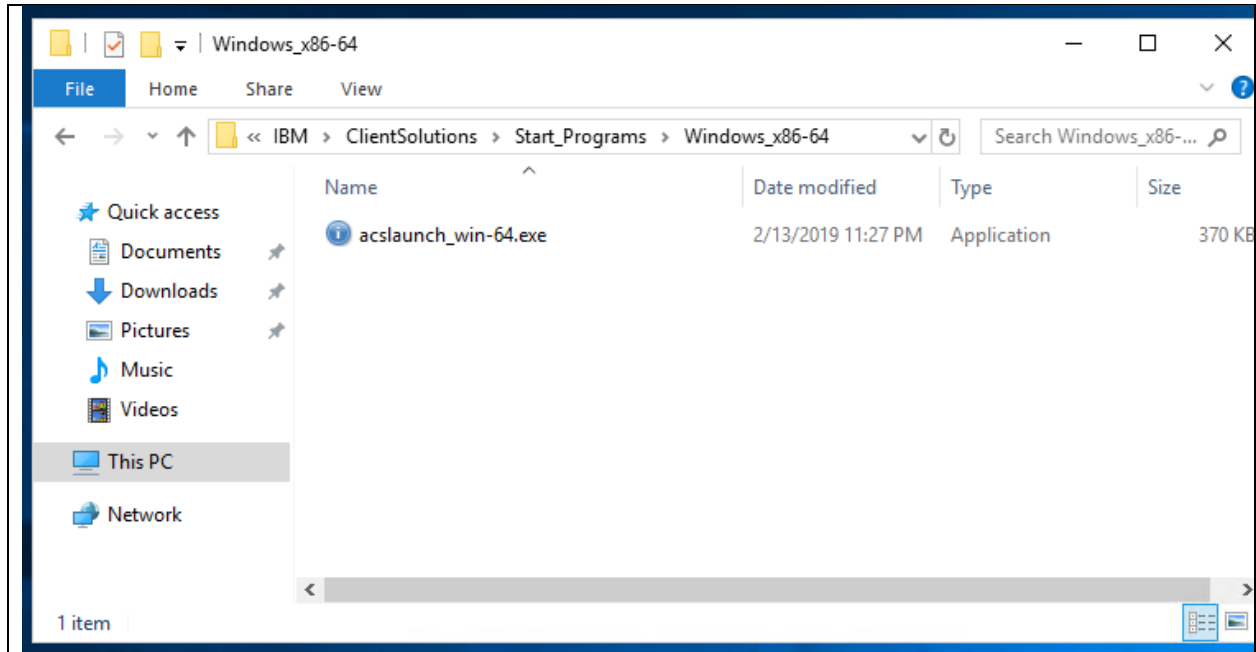
Note:

- The AS/400 was renamed to IBM i some time ago.
- The AS/400 also had the name iSeries.

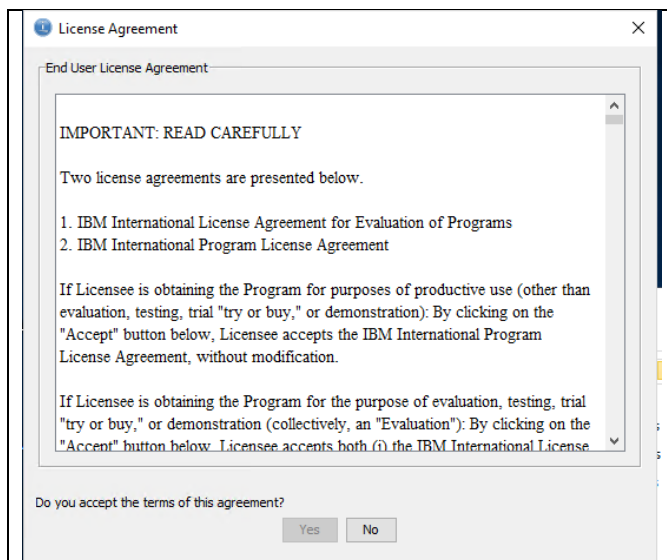
Step 1 – Locate and configure ACS for the PC.

The ACS image will be install to location :

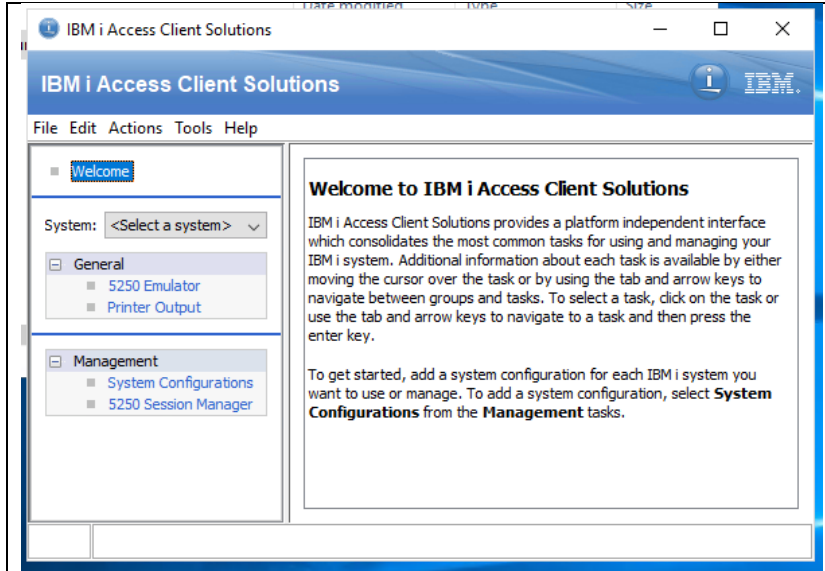
C:\Users\Public\IBM\ClientSolutions\Start_Programs\Windows_x86-64



- Double click the acslaunch_win-64.exe application.
- Scroll down to the end of the agreement and then click Yes to accept the terms of the agreement.



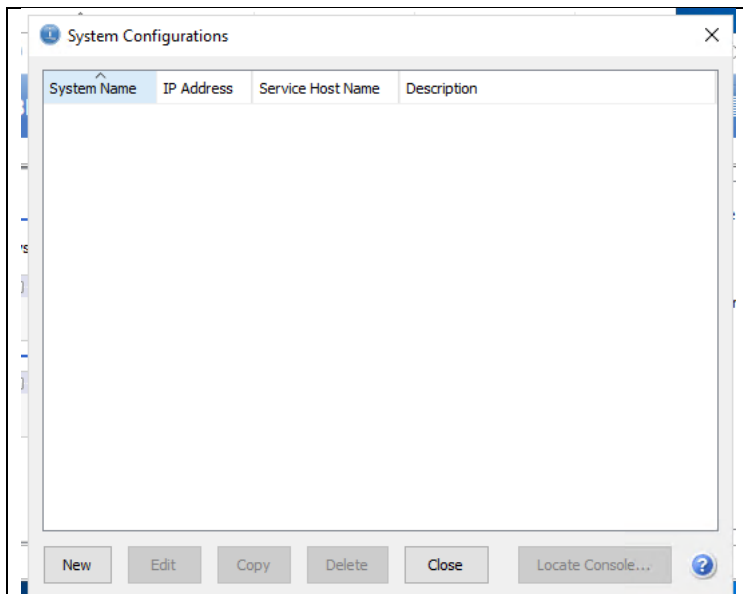
- The ACS configuration screen will be displayed.



- Go to the Management block.
- Click System configuration

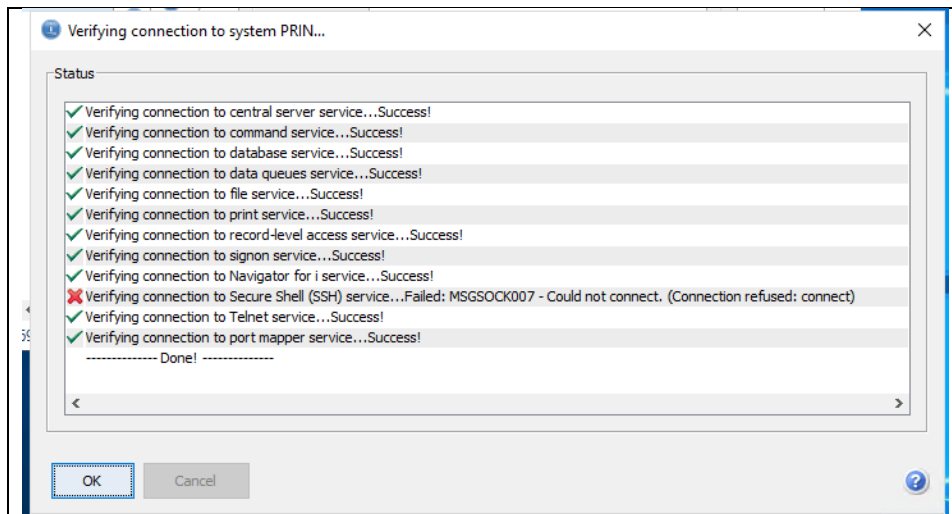
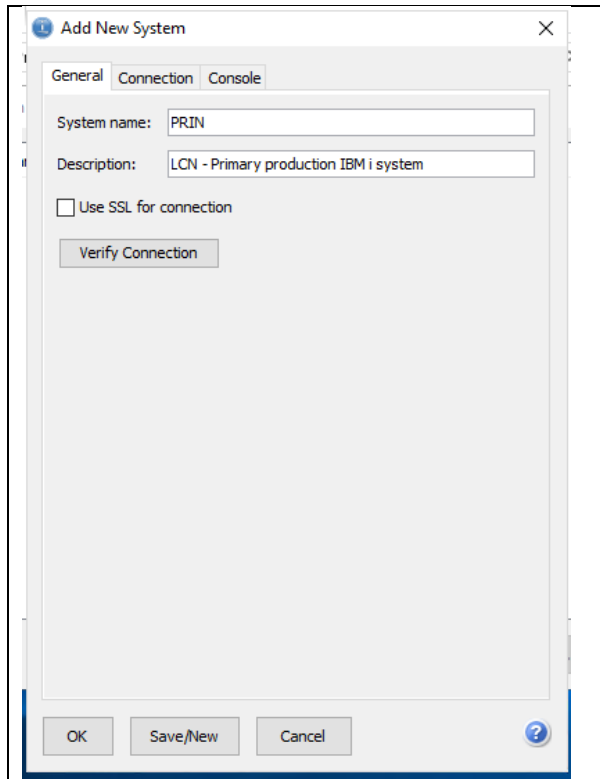


- A empty screen will be displayed.



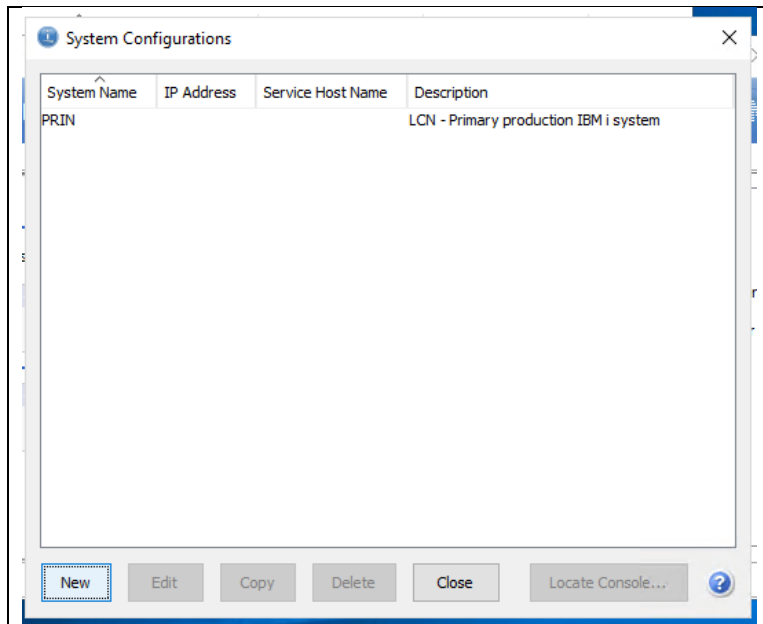
- Click New
- Enter
 - o The system name for your system example PRIN

- Enter a description of the LPAR (Partition)
- If that system is using SSL, check the box.
- Verify the connection.

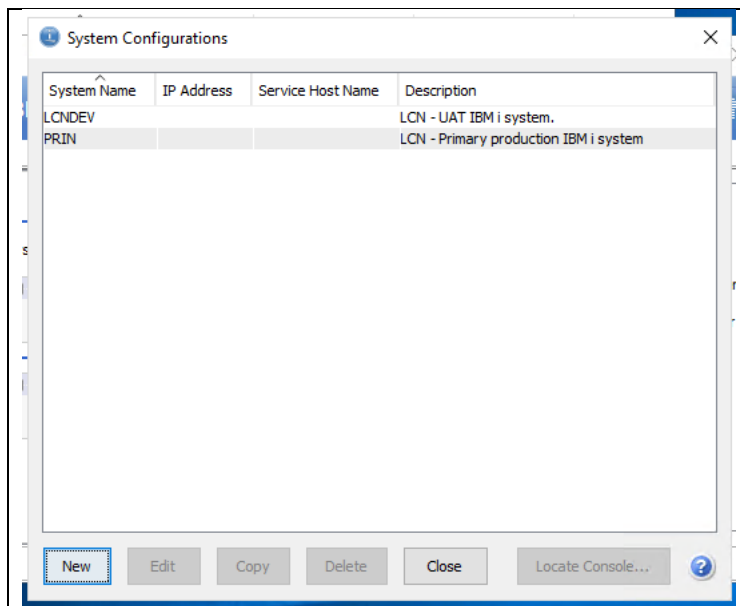


- If SSL is not enabled, the SSH error line will error out. That is okay.
- Click OK
- The system should be displayed. The IP address will be updated later when the system is connected.

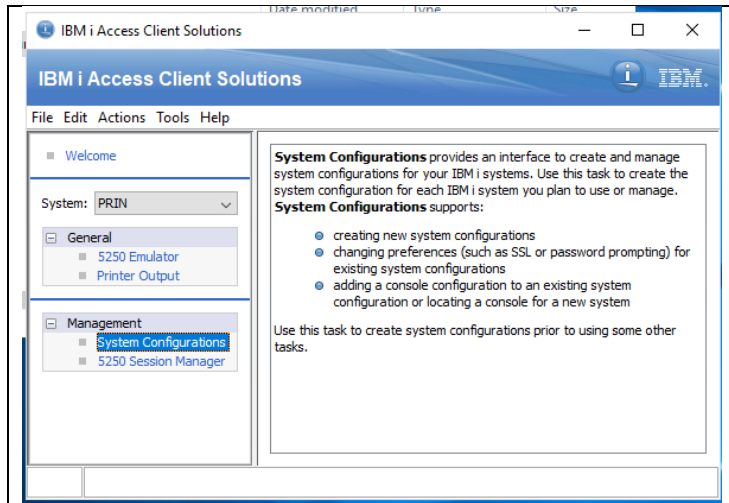
- Repeat the above for other systems needed, example the test LPARs like LCNDEV.



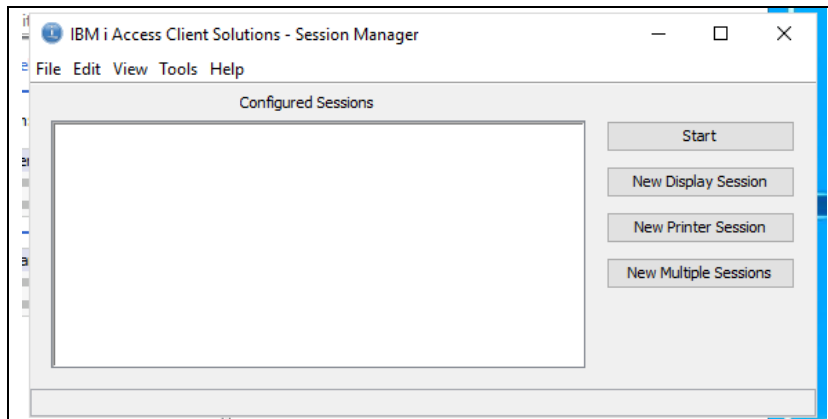
- Adding the UAT system.



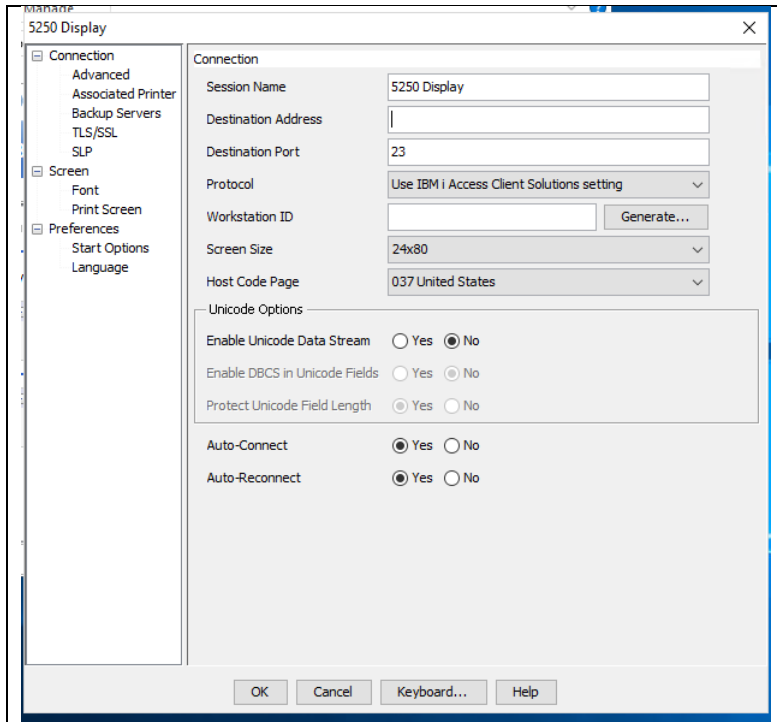
- Click Close.



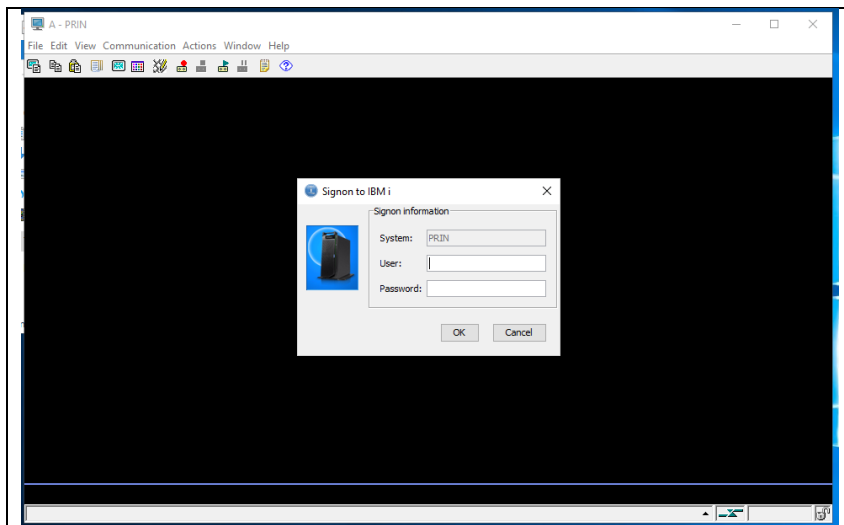
- Click Session Manager

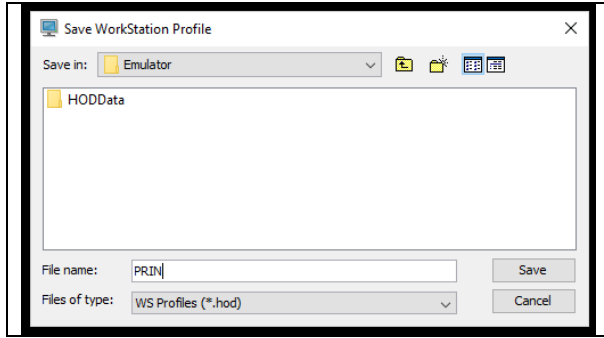


- Add sessions
- Click New Display Session

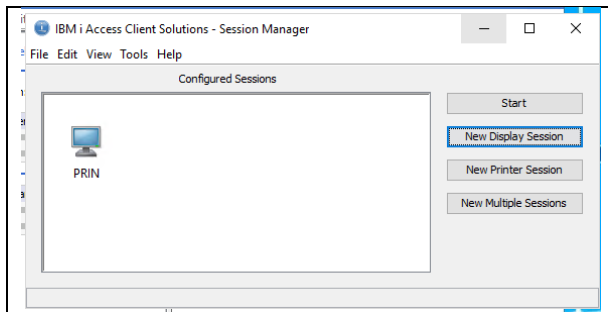


- Change the session name to be the system name example PRIN.
- Enter the Destination Address as the servers DNS name example PRIN.
- Click OK
- A new IBM i session will be displayed.
- Click Cancel and close the session.
- Click Yes to save the session and enter the name of the IBM i server example PRIN.

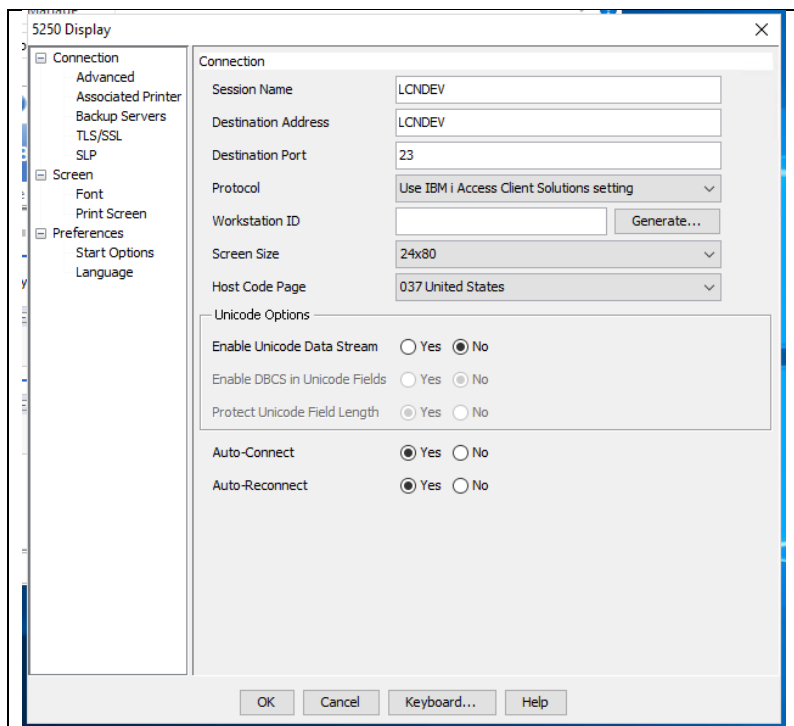




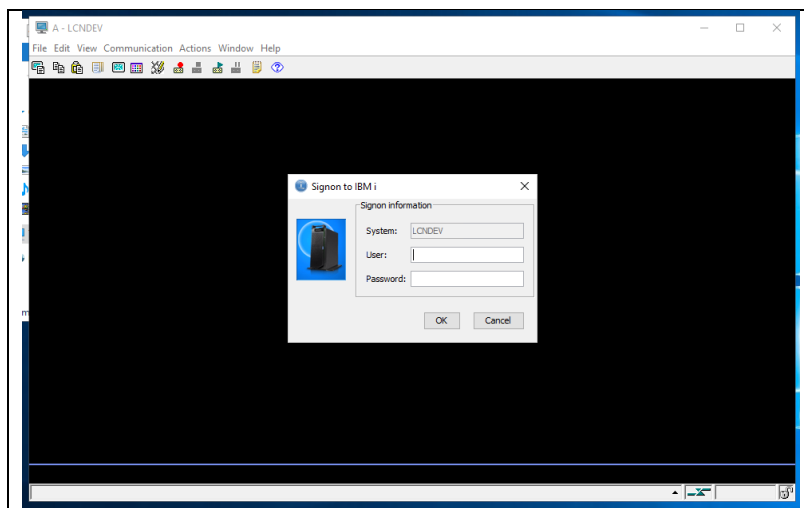
- Click Save



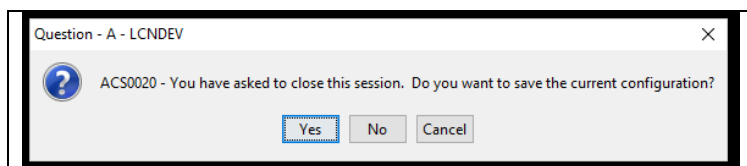
- Add the UAT system if needed. You can always add this later.
- Click New Display Session
- Change the session name to be the system name example LCNDEV.
- Enter the Destination Address as the servers DNS name example LCNDEV.
- Click OK
- A new IBM i session will be displayed.
- Click Cancel and close the session.
- Click Yes to save the session and enter the name of the IBM i server example LCNDEV.
-



- Click OK

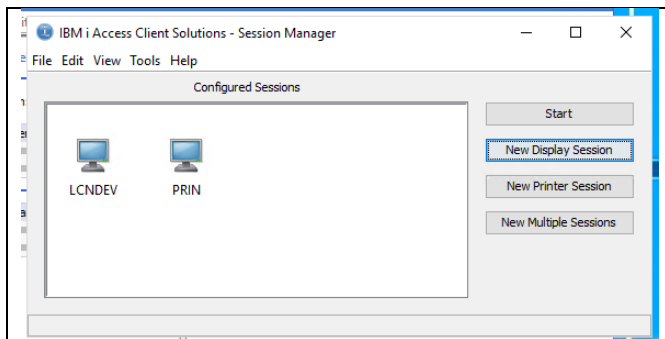
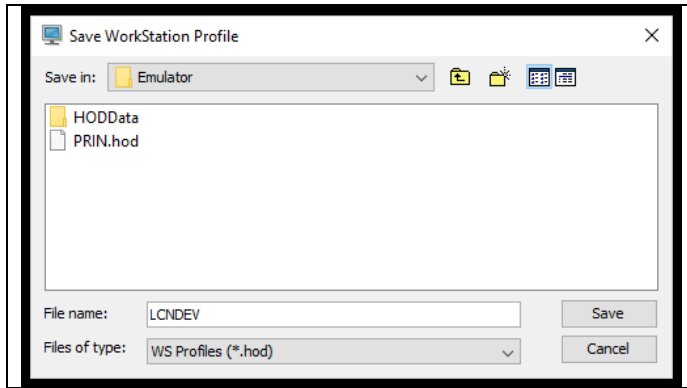


- Click Cancel and close the session.
- Click Yes to save the session

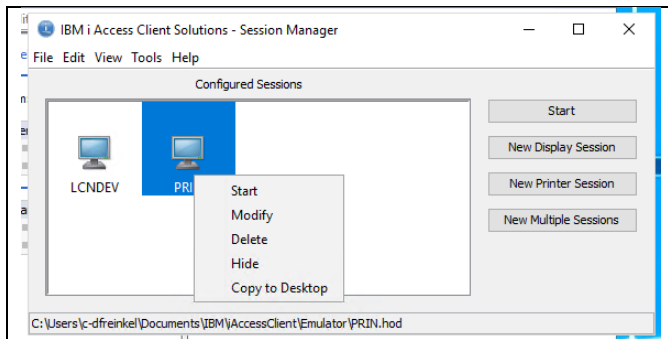


- ENTER the UAT system's name example LCNDEV.

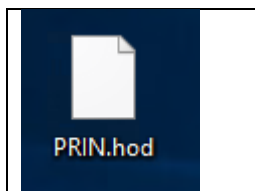
- Click Save



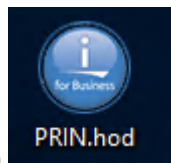
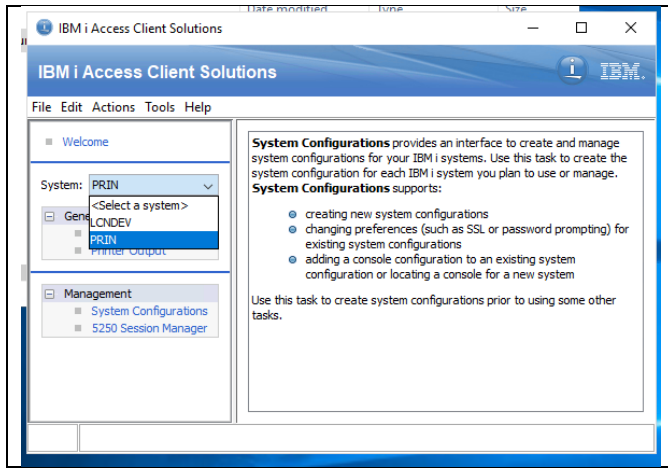
- Now add the icons to the desktop.
- On each system, right click and a menu will display.




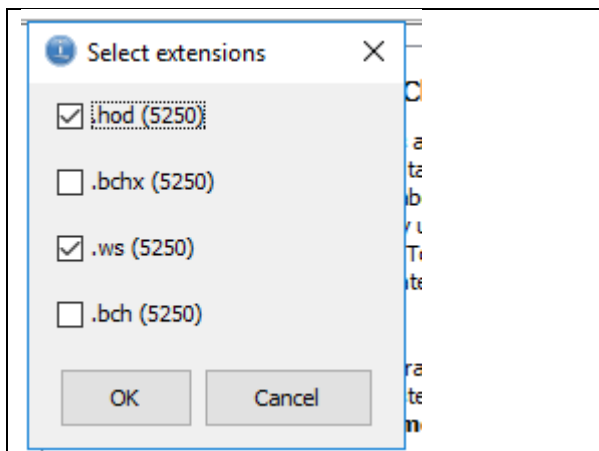
- Click Copy to Desktop.
- The icon should display on the desktop. It may not display as the IBM i Blue image at first.



- Repeat the above for the UAT system, if required.
- Close the Session Manager.
- Note: All systems configured will be displayed in the system drop down box.



- Check that the icon  is displayed. If the icon is something else, complete the following steps.
 - o On the IBM I Access Client Solutions page,
 - Click Tools
 - Click File Associations
 - A box will open.
 - Check the extensions .hod(5250) and .ws(5250)
 - Click OK.



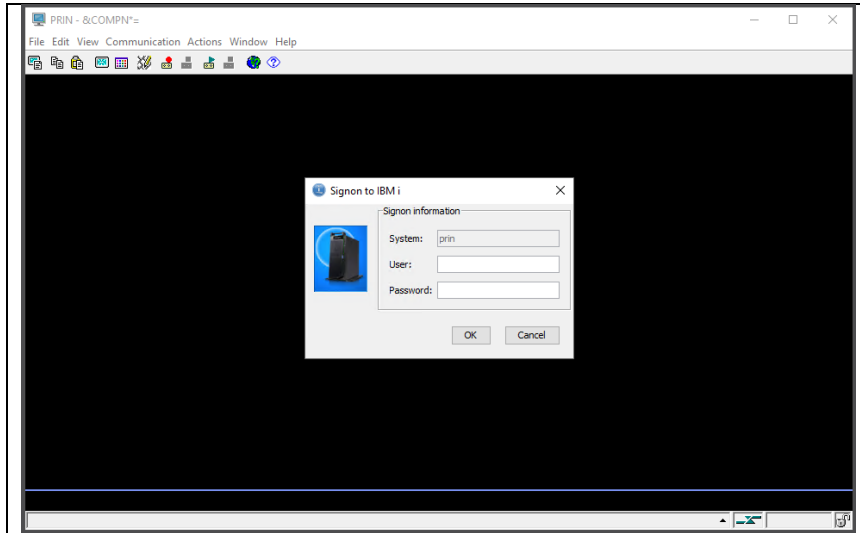
- A completion message will display. Click OK. The Icon may have changed to the new icon. It will change after the first time being used.

- Close the Configuration Manager.
- Close the Windows folder showing the acslaunch_win-64.

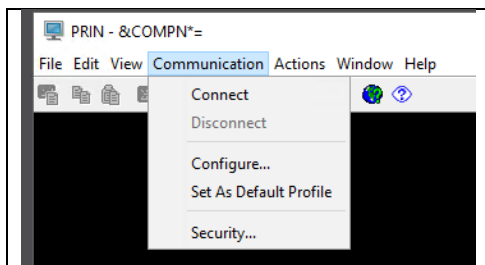
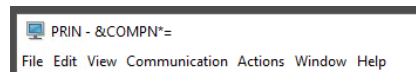
Step 2 – Log onto the PC.



- Double click on LCN as400 or which as400 you are configuring to.
- The Java loading panel will display.
- The Logon Screen will display.

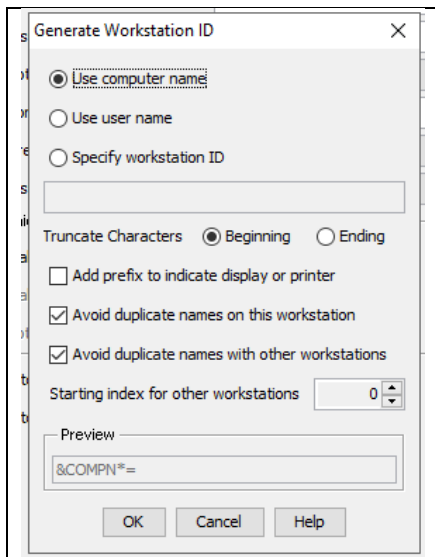


- Click Cancel
- Click Communication
- Click Configure

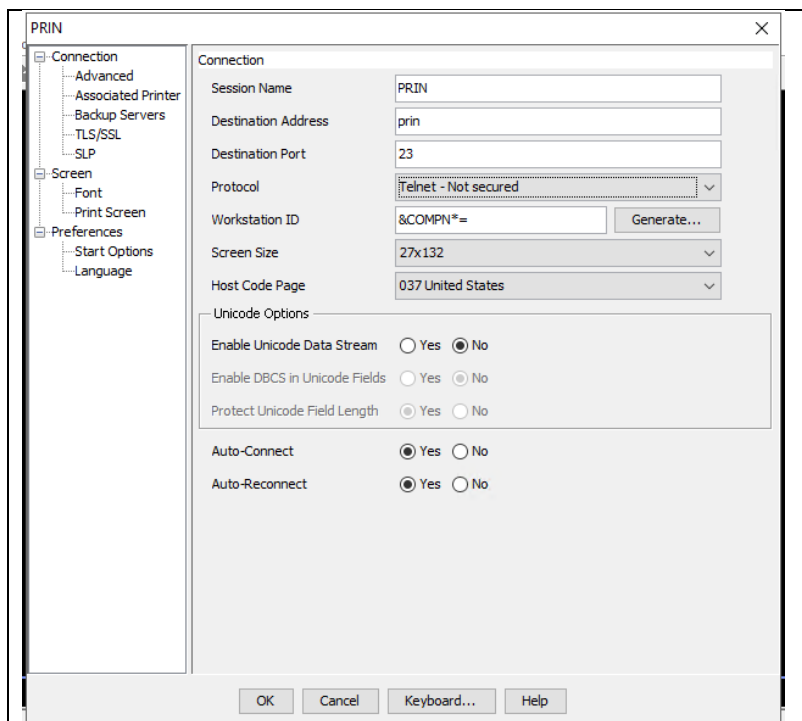


- The configuration panel will display.
- Enter the following:
 - o Session name – this should be the system’s name (LPAR)
 - o Destination Address – This is the IP address or DNS name of the system. Please use the DNS name to prevent having to reconfigure all the ACS configurations if the as400’s IP address changes. The DNS name will usually not change.
 - o Destination Port
 - If not using SSL, it must be 23
 - If using SSL, it must be 992.
 - o Protocol

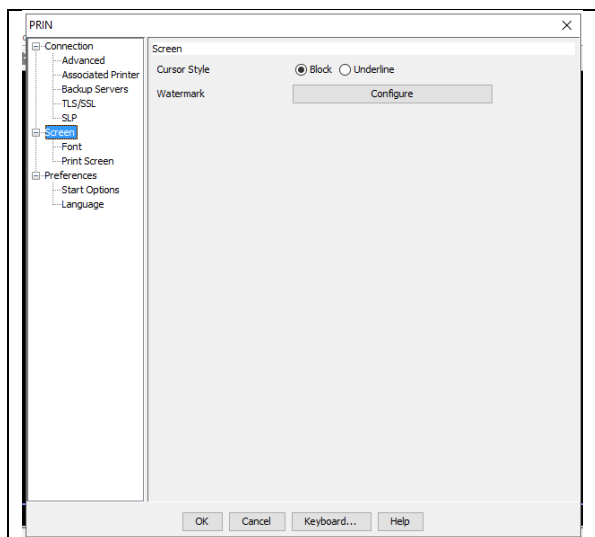
- If not using SSL, use the drop down and select: Telnet – Not Secured
- If using SSL, use the drop down and select: Telnet – TLS/SSL
- Workstation ID
 - Click Generate
 - Click Use computer name
 - Click Truncate characters: Beginning
 - Check the following (to avoid trying to use a session name already in use)
 - Avoid duplicate names on this workstation
 - Avoid duplicate names with other workstations
 - Click OK



- Screen Size – Select 27 x 132
- Host Code Page – it should be 037 United states.
- Enable Unicode data stream – click No.
- Auto-connect - Click Yes
- Auto-Reconnect – Click Yes
- The screen should look like the following:



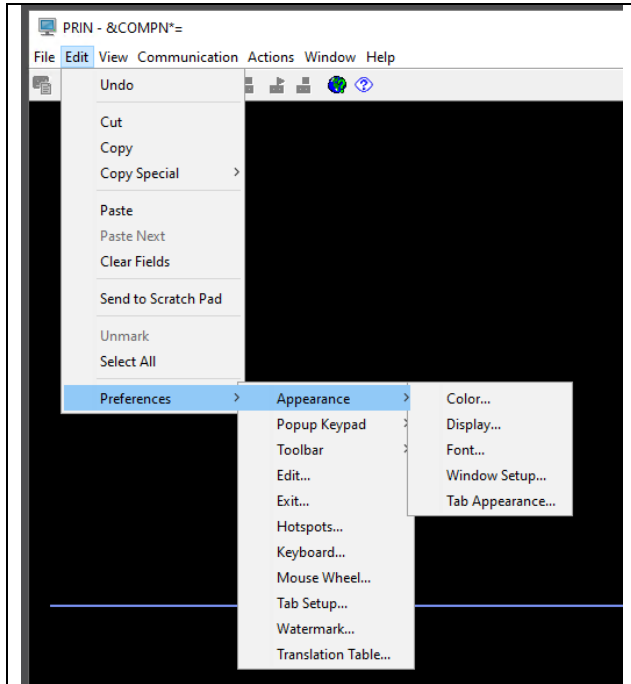
- Click Screen (in the left side of the window).
- Cursor Style – Click Block



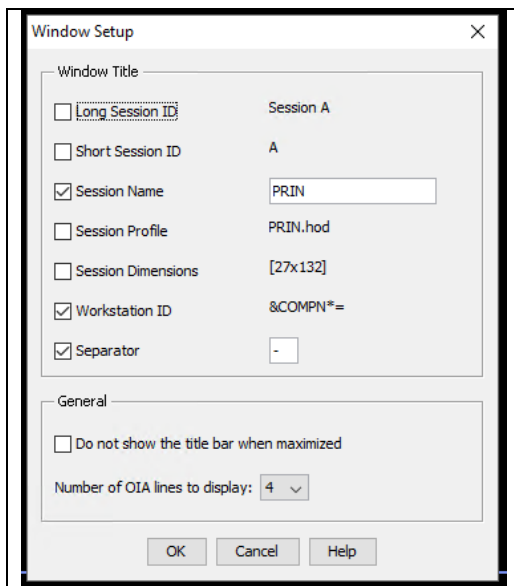
- Click OK.
- The log on screen will display.

Step 3 – Set /verify session values.

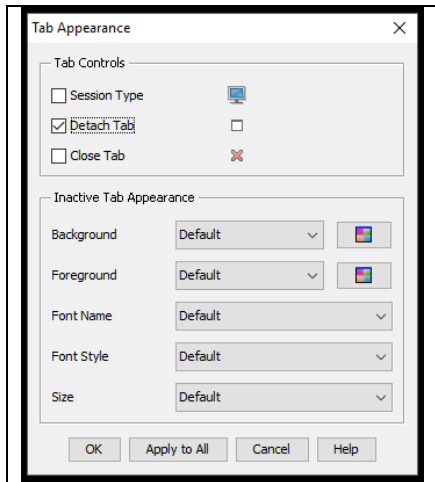
- If the log on screen is displayed, click Cancel.
- Click Edit
- Click Preferences
- Click Appearance
- Click Window Setup



- Ensure the following check boxes are checked.
- The Session name must be the as400 name.



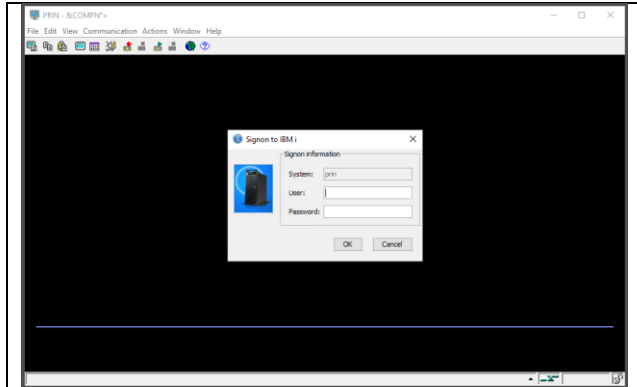
- Click OK.
- Next
 - o Click Edit
 - o Click Preferences
 - o Click Appearance
 - o Click Tab Appearance
 - o Click Detach Tab



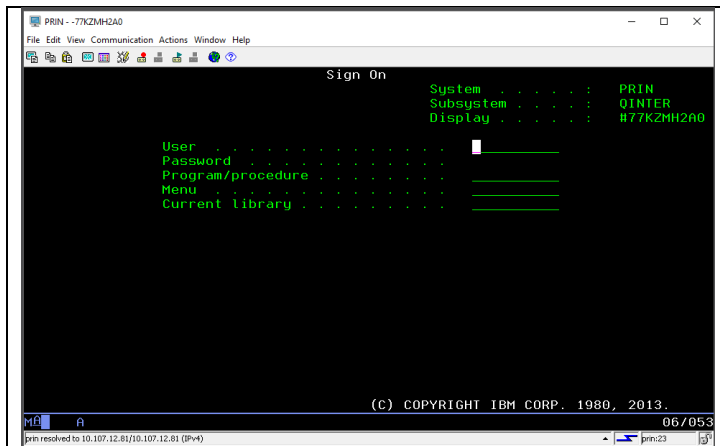
- Click Apply to All.
- Click OK.

Step 4 – Test the configuration.

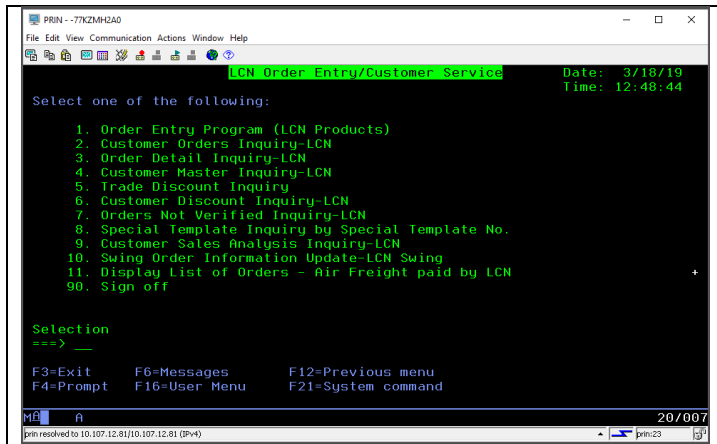
- If you do not have the sign on screen showing,
 - o Click Communication
 - o Click Connect
 - o The as400 screen should display as follows:



- Check
 - o The system name is correct.
- Enter your user ID and password.
- Click OK
- The sign on screen will display. Note: if the as400 allows sign on bypass, the screen displayed will be the user's menu.



- Example Users Menu



The screenshot shows a terminal window titled "PRIN - 7KZMH2A0". The window displays the following text:

```
LCN Order Entry/Customer Service      Date: 3/18/19
                                       Time: 12:48:44

Select one of the following:

1. Order Entry Program (LCN Products)
2. Customer Orders Inquiry-LCN
3. Order Detail Inquiry-LCN
4. Customer Master Inquiry-LCN
5. Trade Discount Inquiry
6. Customer Discount Inquiry-LCN
7. Orders Not Verified Inquiry-LCN
8. Special Template Inquiry by Special Template No.
9. Customer Sales Analysis Inquiry-LCN
10. Swing Order Information Update-LCN Swing
11. Display List of Orders - Air Freight paid by LCN
90. Sign off

Selection
====>  _

F3=Exit      F6=Messages      F12=Previous menu
F4=Prompt    F16=User Menu     F21=System command
```

At the bottom of the terminal, there is a status bar showing "M5 A" and "20/007". A small icon in the bottom right corner indicates the terminal is connected to "prn:23".

- Click 90 to sign off.